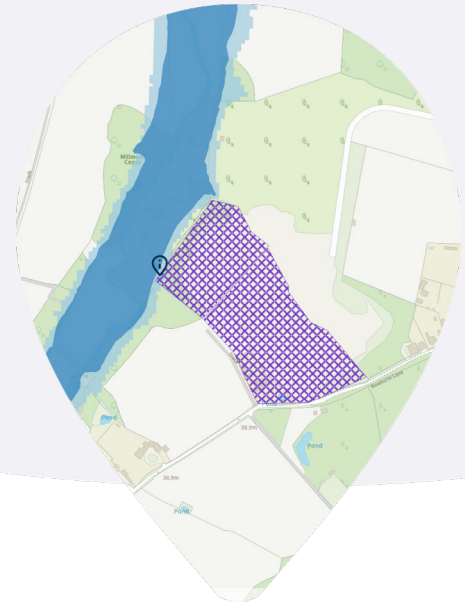


groundsure.io

FAQs

Groundsure's free, online environmental data viewer.



About the platform:

What is groundsure.io?

groundsure.io is an online environmental data viewer - a map used to access information about the environmental conditions at any given location - developed by Groundsure and provided free of charge.

What can .io be used for?

groundsure.io allows you to explore environmental data across Great Britain, providing an early and upfront overview of site conditions at any given location. For environmental or geotechnical consultancy professionals this can help in estimating scope of necessary works, potential costs, and with drafting quotes and project proposals. For other land and property professionals (or really just about any interested party) a range of data is available that can provide either a broad overview of a site, or answers to specific questions - the significance flood or mining risk, for example.

What data is available?

Content includes data on flood risk, geology, boreholes, hydrogeology, mining, past and present landfills, radon, environmental designations (e.g. nature reserves etc), cultural designations (e.g. listed buildings, conservation zones etc) and topography (LIDAR).

Why is there no charge?

Our aim is to give a quick, easy and early view of environmental considerations at a given location. To keep things super-simple we have collated open data (data with no licensing restrictions and therefore no associated licensing costs) from disparate sources and presented it within a single environment - saving time previously spent jumping between different sites. No cost to us equals no cost to you!

groundsure.io FAQs

Groundsures free, online environmental data viewer.

Why do I have to register to use groundsure.io?

To make groundsure.io the best it can be it is important that we know who is using it and how; what bits of information are more or less useful to you, and where we could improve? Having a view of our users is paramount to continued development of the platform. Additionally, we want to provide features that make for a convenient experience, such as 'favourites' or the ability to save things for later - and we need to associate those things with a person or account. Any details will of course be treated in accordance with our privacy policy.

Can I buy Groundsure products on groundsure.io?

Not yet but soon! groundsure.io provides free data to provide an overview of site conditions, but Groundsure holds huge amounts of more detailed data and mapping (covering all the themes available and more) that we package into our Insight products; the raw materials you need to carry out detailed site assessments and desk studies. Creating a seamless experience from that early stage scoping to the later stage detailed site assessment is our short term goal for groundsure.io, so watch out for functionality and features to support that aim, coming soon.

Practical help:

How do I find a specific address or location?

There is a search bar available on landing in which you can search by address (or address part, e.g. postcode) or, if you have them, by coordinates (eastings and northings in British National Grid).

How do I draw a site?

Drawing tools can be found on the right hand side of the map and accessed through the pencil icon. This will expand your drawing options, and you will see the ability to draw a free-hand polygon (point by point) or by our neat 'fill' tool, which lets you use features on the base-map to build out your site of interest. With the tool active simply click on the map to select a feature, then select adjacent features to expand the site (adjacent features are indicated on the map). Click the fill tool icon once more to complete the site.

groundsure.io FAQs

Groundsures free, online environmental data viewer.

How do I view the available data?

Add data to the map via the 'Layers' menu on the left-hand navigation bar - here you will be prompted to 'Add data'. Data layers are organised into categories. Click 'Add +' to add the layer to the map and your active layers view; where you can turn them on and off, see the key or legend for each layer, and tweak the opacity to get the right view for you.

How do I find out more about the data?

Hit the 'i' button from the add layers menu to find out more about each data layer; what it shows, where it's come from, what sort of coverage is available and any licensing information.

Where has the measure tool gone?

Don't worry we haven't got rid of this permanently. This will be back on groundsure.io soon.

Why can't I see the high-detail mapping any more?

Some of the content on groundsure.io costs Groundsure for you to view, so we have implemented a fair use policy. We will be keeping tabs and users viewing too much of the good stuff (the really zoomed in base-mapping) will be cut-off temporarily, with the functionality being returned in the next calendar month. Soon you will be able to avoid this limitation by simply purchasing a Groundsure product on the platform!