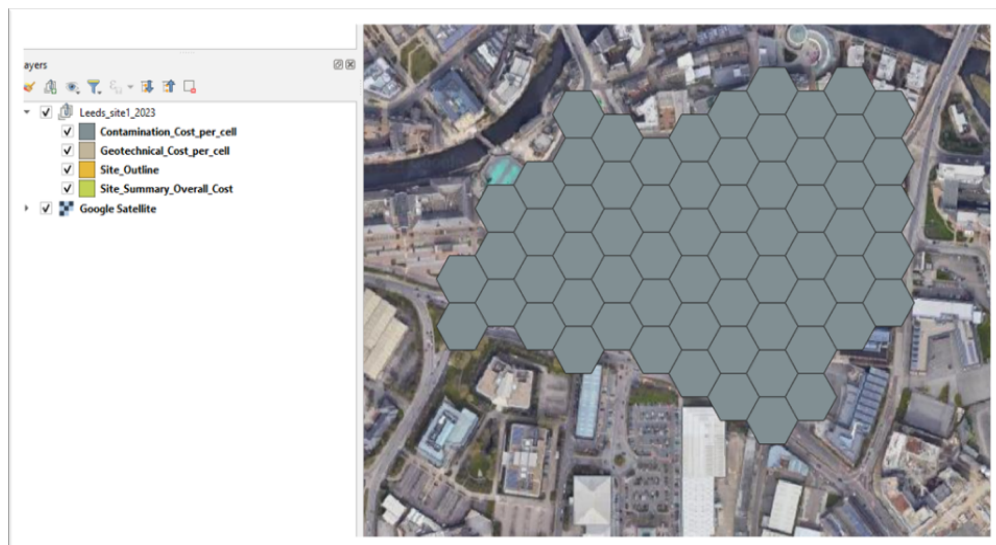


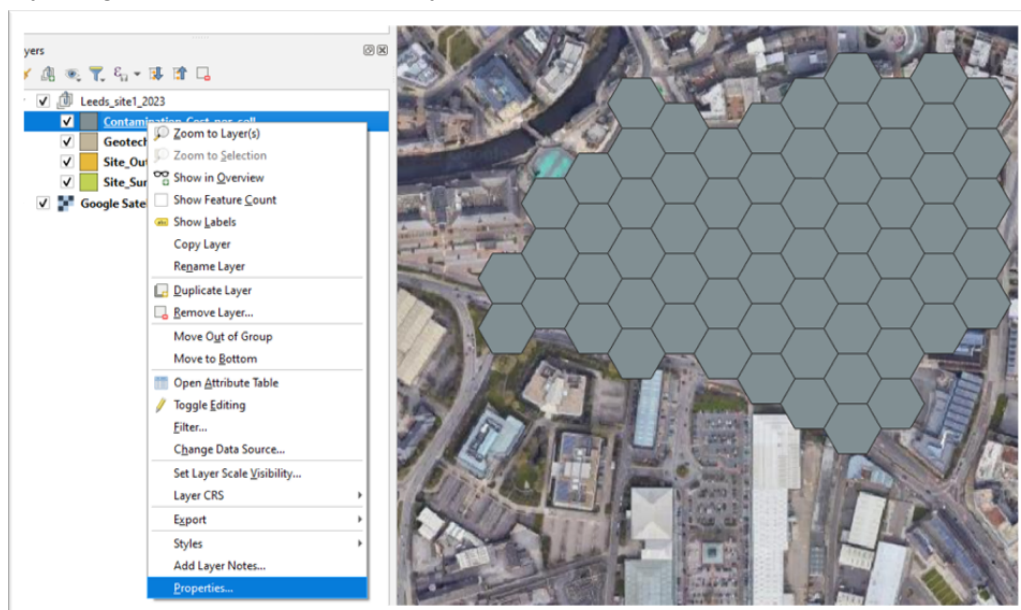
Groundsure Groundscreen Styling Guide for QGIS

Procedure for Contamination cost per cell, Geotechnical cost per cell, Site summary overall cost

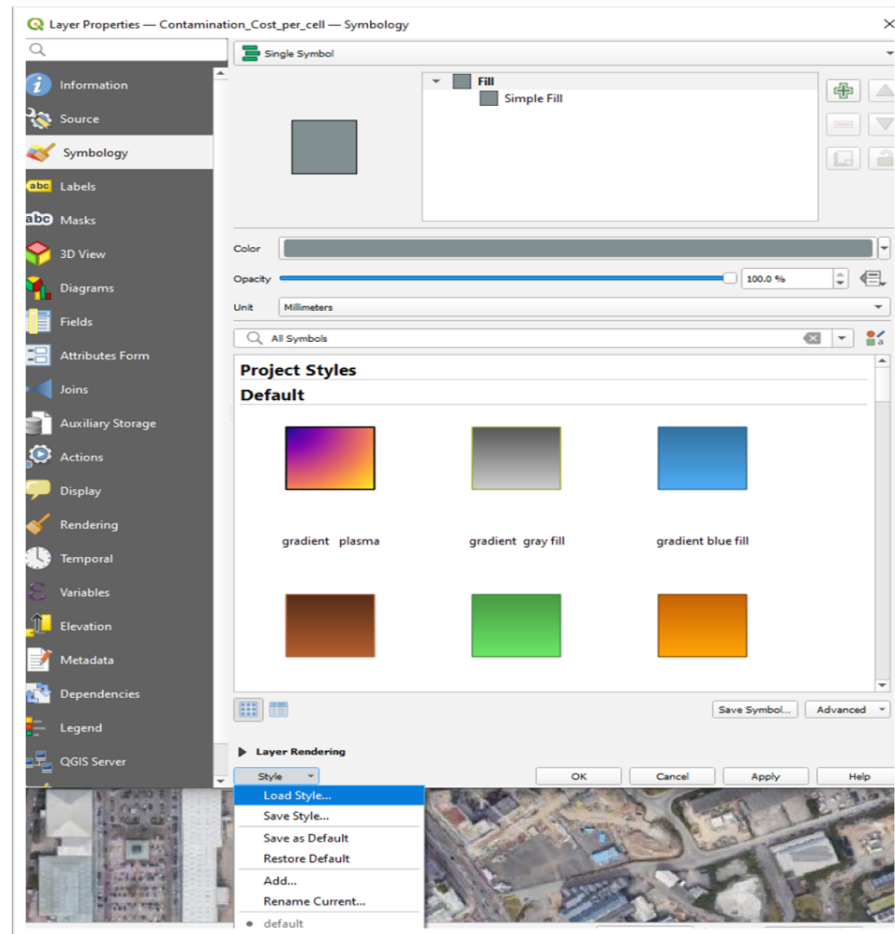
1. Once the data has been downloaded the Geopackage can be imported into your GIS software, this styling guide will be using QGIS as the main form of data display, 4 layers should be present detailing your site as shown below. For this example the contamination cost per cell layer will be worked through.



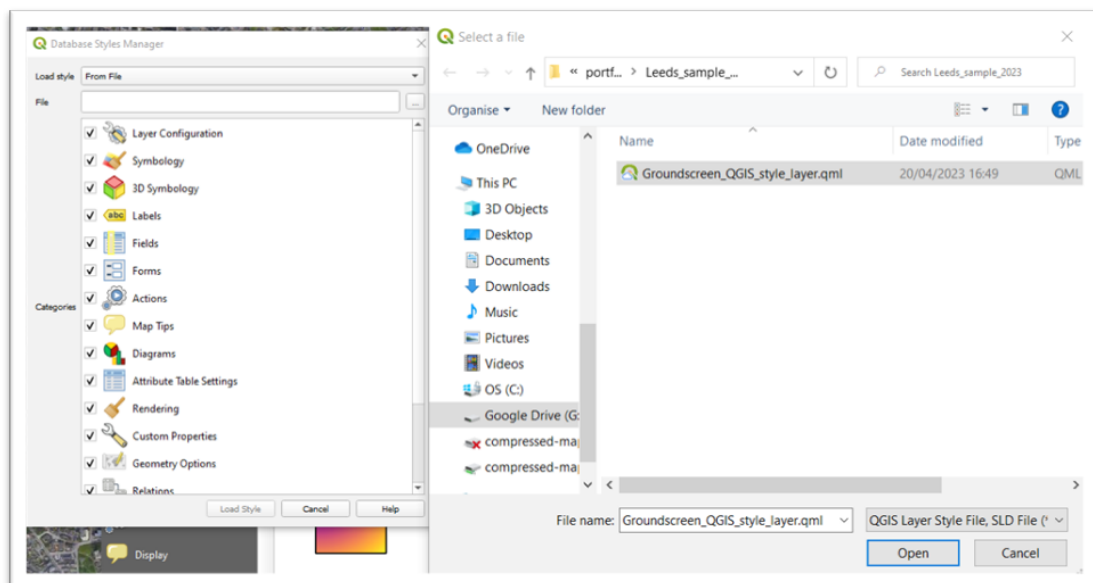
2. To style, right click on the chosen layer and select 'Properties'



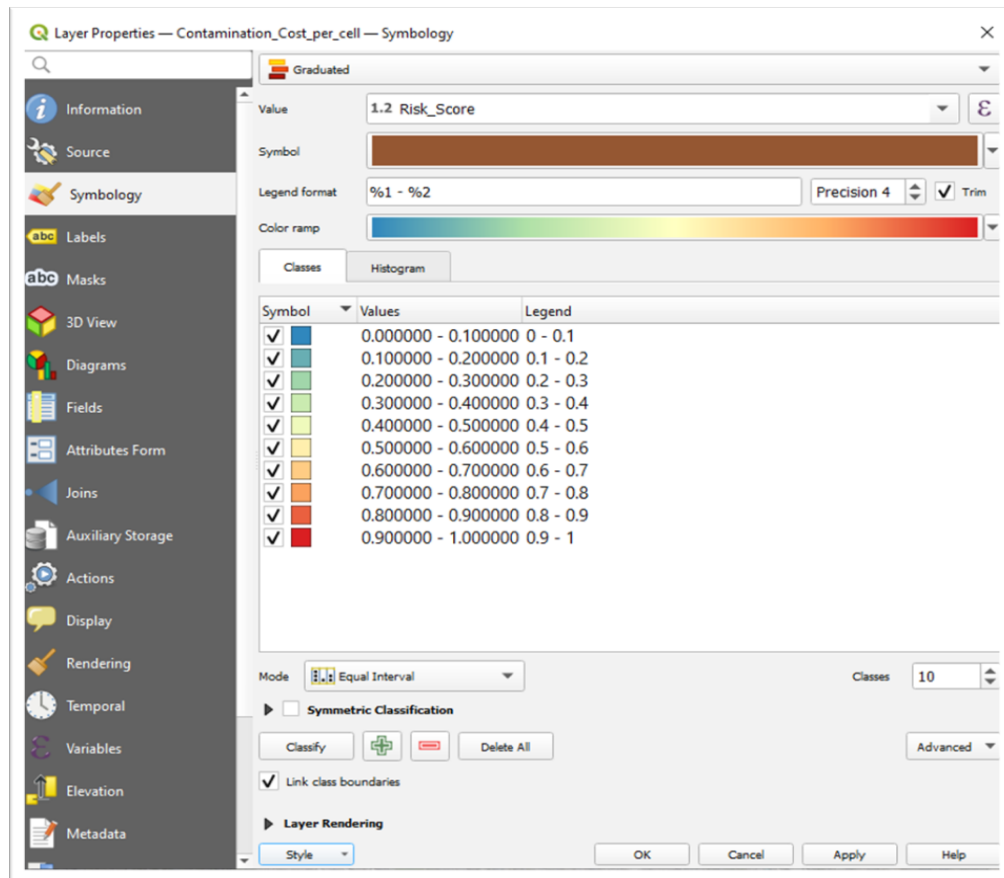
- From here 'Symbology' can be selected from the side of the layer properties box. In layer symbology the provided QGIS style layer can be loaded using the 'Load Style' from the bottom drop down menu, as shown below



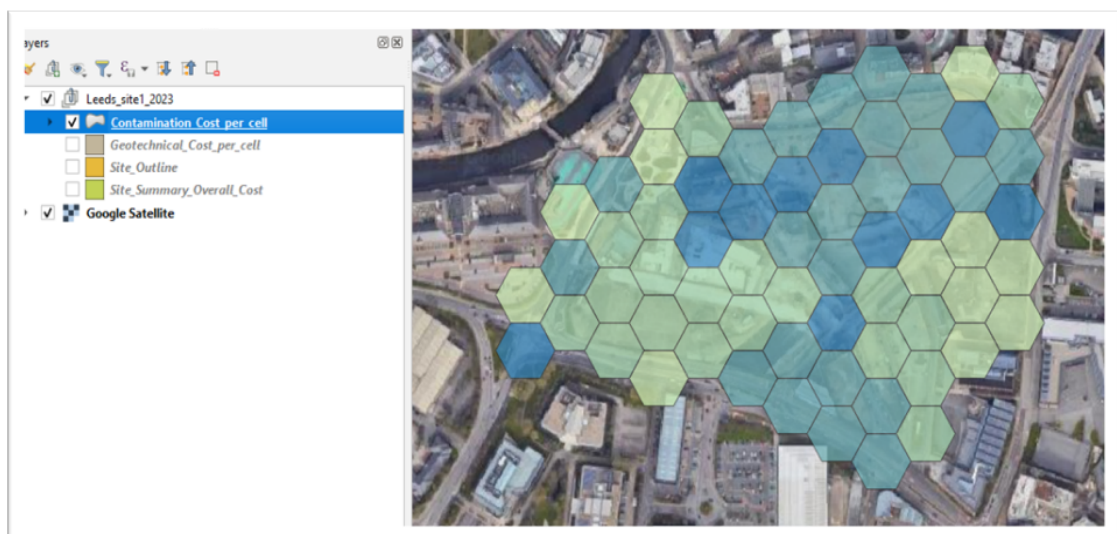
- You will then get a pop up of a 'Database Styles Manager' which can be used to locate the QGIS style file, qml, by clicking on the 3 dots '...' and locating the saved style layer which will be located in the same file provided in the data download



- Once the .qml layer has been selected and loaded you will be able to see the symbology is styled on the column *Risk_Score* with values going up in 0.1 increments from 0, low risk in blue, to 1, high risk in red. To style your layer following this colour scheme click the 'Apply' button at the bottom of the pop up



- You should now have a styled hexagon layer like the image shown below. These steps can now be repeated for Geotechnical cost per cell and Site summary overall cost

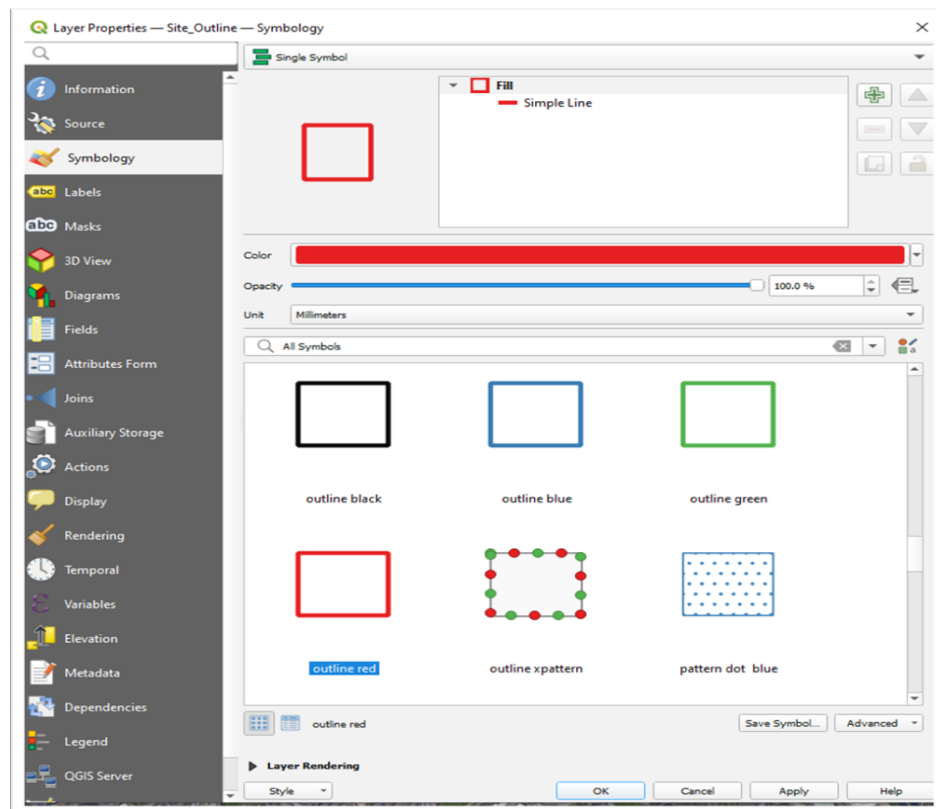


Procedure for Site outline

1. In the Groundscreen data download the outline of the site used to process the order is supplied and can be used to overlay over the hexagon layers.



2. To style the site to show the outline the steps are similar to above. Starting off by right clicking on the 'Site_Outline' layer and selecting 'Properties' at the bottom of the pop up list
3. Once the layer properties box has opened, 'Symbology' can be selected from the side menu. From here your own style or a preloaded QGIS style can be used. In this scenario a pre existing symbol from qgis was selected from one of the styles provided in the 'All Symbols' search as shown below



4. Once your desired style is selected, click apply to style. The outline of the site can be displayed above the hexagon layers by dragging the 'Site_Outline' data layer above the other provided data layers to get the outcome of the below image

